

Your Boat Deserves the Best Dual-Biocide Protection

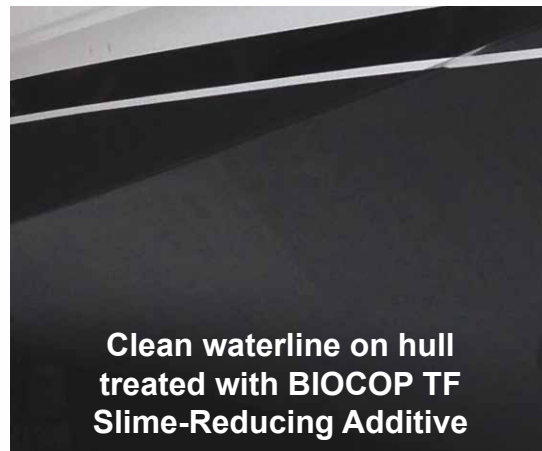
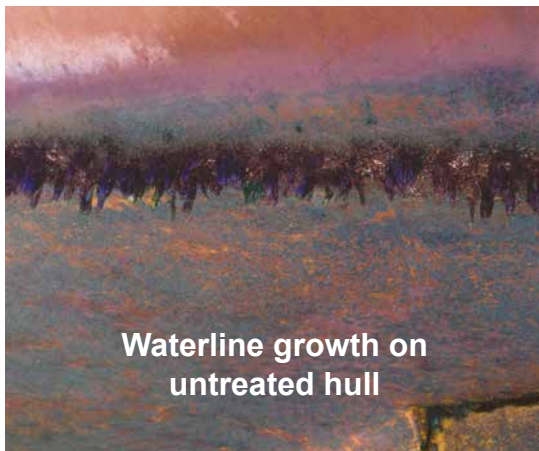
BIOCOP TF™ as a Slime-Reducing Additive

Added to our ablative and hard modified epoxy copper-based antifouling paints offers a **wide variety of dual-biocide options**



You Deserve the Best One Year Written Warranty*

BIOCOP TF Stops Slime at the Waterline



www.SeaHawkPaints.com

Sea Hawk
PREMIUM YACHT FINISHES



BIOCOP TF Slime-Reducing Additive FAQs

1. How much BIOCOP TF additive can be added to a gallon of antifouling paint?

Answer: One pint of Biocop TF per gallon is the optimum ratio.

2. What is the correct way to blend the BIOCOP TF additive into a gallon of paint?

Answer: Both the Biocop TF additive and the copper-based paint you are adding it to need to be mixed first on a shaker and then added to a separate container large enough to accommodate 1.125 gallons (gallon + pint) and stirred by hand until uniform.

3. Will there be a color change to my bottom paint if BIOCOP TF additive is added?

Answer: In most cases the color will be very slightly lighter because the Biocop TF additive is a neutral shade of gray. When the entire hull is painted, the color difference is virtually indistinguishable.

4. Can the paint be thinned after the BIOCOP TF additive has been added?

Answer: Yes, the entire mixture can be thinned up to 10% using Sea Hawk 2033 or 2035 Reducers if necessary as increased viscosity may occur in warm weather.

5. What is the window for application after adding the BIOCOP TF additive to antifoulant paint?

Answer: The window of application is 12 hours maximum. However it is recommended to mix and apply immediately for optimum results.

6. Will the antifouling thickness requirements change when adding BIOCOP TF additive?

Answer: No. Follow the thickness requirements for the antifouling as stated on label and TDS. All TDS sheets are available on the Sea Hawk website at: www.SeaHawkPaints.com

7. Is it recommended to use the BIOCOP TF additive in all coats of antifouling being applied to the boat hull?

Answer: Yes, adding Biocop TF to all coats of antifouling paint application ensures uniform antifouling agent release over time as your bottom paint wears with use.



May be used individually as a complete dual-biocide solution or as a booster to our copper-based antifouling products

